

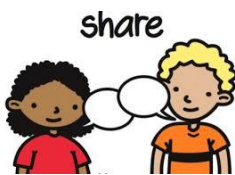
## **INTERVENTIONS**



At Prenton Primary School the interventions we may offer include:

**Orrets Meadow Outreach Support** - this intervention supports the learning of children with literacy difficulties/specific learning difficulties on an individual basis at Prenton Primary School. Assessments are completed and are used to create baseline information on which to set individual targets and form the basis of teaching programmes. The teaching methods are multisensory, structured and cumulative with opportunities for regular revision and over-learning. Outreach Teachers aim to provide homework activities for their pupils and develop good links with parents/carers and school colleagues.

**SENAAT (Special Educational Needs Assessment & Advisory Team)** - their focus is to complete assessments and provide information for children across Key Stages 1 and 2, related to a wide range of special needs. Written reports are provided with advice regarding appropriate support and provision. This work also includes Access Arrangements for examinations.



**Talking Partners** to support children's language development. This involves three children working with an adult Partner for twenty minutes, three times a week. The children look at both fiction and non-fiction texts, linked to current curriculum planning. The programme lasts for ten weeks, after which time most children will have made significant progress in their speaking and listening skills. All adult partners have received two days of intensive training in order to be able to deliver this programme.

**Socially Speaking** - a pragmatic Social Skills Programme for pupils. Socially Speaking focuses on the development of social and relationship skills, play times, self-organisation, regulation and stress management, with an aim to help children better understand the social world around them.

**Time to Talk** - a programme to develop Oral and Social Interaction Skills for Foundation and Key Stage One. Time to Talk will allow children to develop their understanding of the 'rules' of interaction with the help of Ginger Bear, who features in all the activities. The skills taught include eye contact, sharing, greetings, awareness of feelings, giving and following instructions, listening, attention and play skills.

**Speech & Language Therapy** – Ms Haith is our Speech and Language therapist. This service assesses and treats children who have speech, language and communication difficulties. These needs may be speech pronunciation, understanding and using language, stammering, social communication, voice, eating and drinking. School accesses 3 days a month support for pupils. The therapist works closely with staff and parents.

**Nuffield Early Language Intervention NELI** – All children in F2 have their language and communication skills assessed upon entry to school in the autumn term. Our Early Language Intervention supports any children identified as having early language difficulties. A trained member of staff works closely with small group of children, building their understanding and use of everyday language in fun sessions 3 x weekly.

**Little Wandle Keep Up** – Embedded within our newly acquired phonics programme, children at risk of falling behind age-related reading ages receive daily extra phonics and reading sessions either on a 1:1 basis or within a small group with a trained member of staff.

**Bug Club – KS1** Children in KS1 can access Bug Club in school and at home. Bug Club hooks children into reading with a truly engaging and interactive world. It is a school online programme. Bug Club works on PC, laptop and iPad. Pupils are given a login code by their teacher.



### **Other provision**

P4C is a programme to enable children to develop their thinking skills and is time to talk and think.

Circle Time is weekly and enables children the opportunity to share their experiences.

Lunch Club is mainly for KS1 children but may be offered to KS2 children. It is for children who may find it difficult to access the playground at lunchtime.

Games Club is offered to KS2 children. It is time to socialise and develop team skills/social skills/sharing.

